

WISUALARM

YOUR WISE CHOICE FOR FIRE SAFETY SOLUTIONS

Smarter & Safer Fire Protection

UK & Ireland | 2024



CONTENTS

01	About WisuAlarm	02
02	Our Commitment to Safety & Quality	03
03	Fully Compliant	05
04	Gold Standard Manufacturing & Testing	05
05	Product Portfolio	07





About Us

WisAlarm Technology UK & Ireland, a subsidiary of Dahua Technology, is committed to delivering sophisticated fire protection products and solutions. Headquartered in Maidenhead, Berkshire, the company prides itself on providing seamless service and support to clients across the United Kingdom and Ireland.

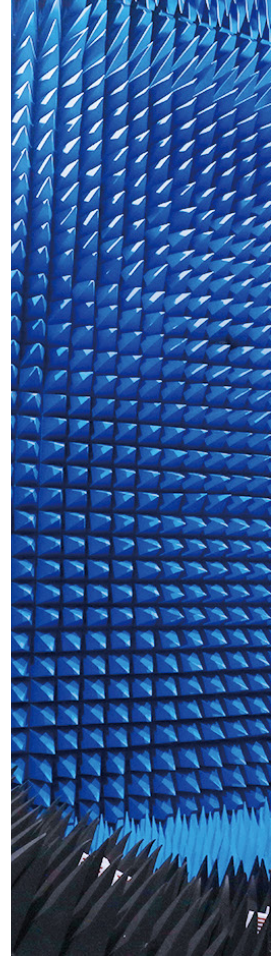
Utilising technological advancements in video analysis, cloud computing, big data and intelligent IoT, WisAlarm offers fire prevention and extinguishing services that feature the latest innovations in fire safety. WisAlarm's overall aim is to assist local authorities, specifiers, distributors and installers in deploying comprehensive, safe and effective fire management solutions that stand the test of time.

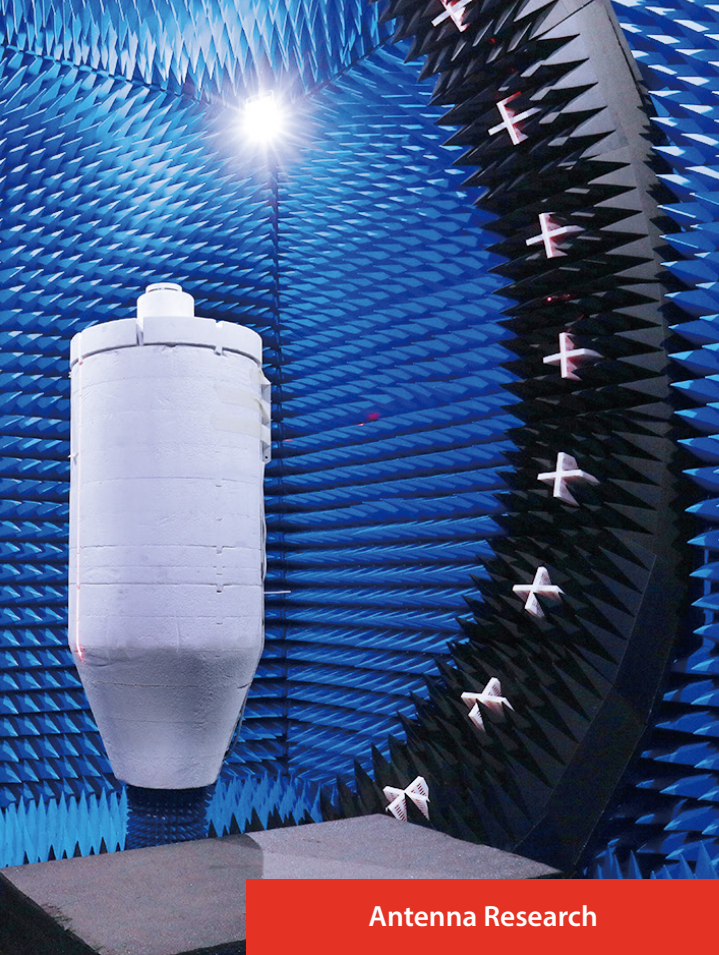
Catering to a wide range of business scenarios, WisAlarm presents its clients with an extensive selection of products and solutions that are rigorously tested to relevant British and European Standards by BSI, and are CE/UKCA marked.

Our Commitment to Safety & Quality

WisAlarm and Dahua Technology boast an advanced engineering test centre spanning 5,000m². With over 30 laboratories, including an EMC anechoic chamber, Highly Accelerated Life Testing (HALT) laboratory and a device analysis laboratory, we focus on fundamental research and testing of materials, components, single boards and entire machines. Our reliability testing has received accreditation from the China National Accreditation Service (CNAS). Additionally, WisAlarm offers fire and smoke simulation capabilities and conducts precise testing of smoke and heat detectors in state-of-the-art test tunnels from Lorenz and AW technology.

As a subsidiary of Dahua Technology, WisAlarm manufactures all its products in the Dahua Smart (IoT) Industrial Park, covering 510 acres. This includes a 4,500m² mould factory, a 46,000m² intelligent stock preparation warehouse, a 26,000m² PCBA factory, a 10,000m² dust-free module factory, a 130,000m² full-process automated factory, and 200,000m² of warehousing, logistics, and ORT lab space. Our products undergo digital, visualised, and traceable production control facilitated by advanced production software such as SCP, APS, MES, and PDM. We operate over 50 cutting-edge SMT dual-track production lines, 36 self-developed automated assembly platforms, and 90 automated testing lines, enhancing overall production efficiency and product quality.





Antenna Research



Fire and Smoke Simulation



Reliability Testing

Fully Compliant



Gold Standard Manufacturing & Testing

51

SMT
dual-track
production
lines

36

Automated
assembly
platforms

90

Automated
testing
lines

16

Wave
soldering
machine
lines

260

Automated/
semi-automated/
standard
production
lines



4,500m² Mould Factory

Integrating mould development and manufacturing to consistently deliver high-precision products and services.



46,000m² Stock Preparation Warehouse

Achieving precise material distribution and effective management through the utilisation of intelligent warehousing systems.



26,000m² PCBA Factory

Accommodating the production of samples, small batch products and high-end products by equipping with more than 50 advanced SMT production lines.



130,000m² Full-Process Automated Factory

Achieving adaptable production for assembly, testing, and packaging through the integration of independently developed automated production lines alongside machine vision cameras.



200,000m² Warehousing & Logistics Area

Comprehensive integrated system management aimed at significantly reducing the delivery time of finished products and enhancing customer satisfaction.

Mains-Powered Products Series

A Mains-Powered product within a domestic property refers to an alarm system directly connected to the electrical mains supply of a building. This type of system offers smoke and heat detection capabilities. Unlike relying solely on battery power, these alarms derive their power from the electrical grid, ensuring a consistent and dependable power source.

D1



Mains-Powered Smoke Alarm with Rechargeable Lithium Battery Back-up

DHI-HY-SA5MA

Power Source
AC 230 V, 50 Hz

Battery Type
Rechargeable lithium battery

Sensor Type
Split-spectrum photoelectric sensor

Safety Standard
BS 14604:2005

Certification
BSI, UKCA and CE listed

Alarm Sound Level
≥85 dB at 3m (10ft)

Silence Duration
9 minutes

Infrared Silence Function
Supported



D1



Mains-Powered Heat Alarm with Rechargeable Lithium Battery Back-up

DHI-HY-HT5MA

Power Source
AC 230 V, 50 Hz

Battery Type
Rechargeable lithium battery

Sensor Type
Thermistor

Safety Standard
BS 5446-2: 2003

Certification
BSI, UKCA and CE listed

Alarm Sound Level
≥85 dB at 3m (10ft)

Silence Duration
9 minutes

Detection Class
Class A1 fire detection (54°C - 65°C)

D2



Mains-Powered Smoke Alarm with Replaceable 9V Battery Back-up

DHI-HY-SA5MB

Power Source
AC 100V - 250V, 50/60Hz

Battery Type
Replaceable 9V alkaline battery

Sensor Type
Photoelectric

Safety Standard
BS 14604:2005

Certification
UKCA, CE listed

Alarm Sound Level
≥85dB (A) at 3m (9.84ft)

Silence Duration
9 minutes

Infrared Silence Function
Supported

D2



Mains-Powered Heat Alarm with Replaceable 9V Battery Back-up

DHI-HY-HT5MB

Power Source
AC 100V - 250V, 50/60Hz

Battery Type
Replaceable 9V alkaline battery

Sensor Type
Thermistor

Safety Standard
BS 5446-2:2003

Certification
UKCA, CE listed

Alarm Sound Level
≥85dB (A) at 3m (9.84ft)

Silence Duration
9 minutes

Detection Class
Class A1 fire detection (54°C - 65°C)

Works with our
D1 and D2 smoke
and heat alarms.



Wireless Connection Module

DHI-HY-MRF50-R8

Power Source
Powered by Alarm

RF Range
A minimum of 100 metres in free space

RF Visual Indicator
Flashing Red: RF transmission
Flashing Blue: Successfully interconnected

Operating Frequency
868 MHz

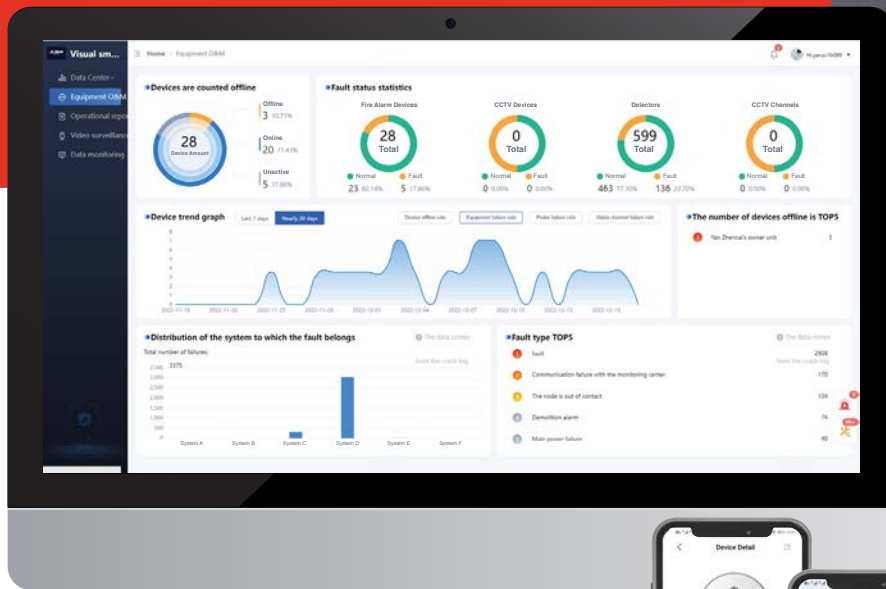
Maximum Number of Connections
24

Certification
UKCA, CE listed

Operating Temperature
-10°C to +55°C (+14°F to +131°F)

Wisulink Product Series

The Wisulink product series comprises a wireless interconnected network encompassing smoke alarms, heat alarms, carbon monoxide (CO) alarms and a wireless gateway facilitating their connection. Additionally, integral components include a website portal and a mobile application, crucial for offering data visualisation, fault indication and alarm notifications tailored for landlords and end-users respectively.





Wireless Home Safety
Network Based on 868 MHz
Radio Frequency



Connect up to 24 Wireless
Alarm Devices



Long Transmission Distances
and Wall-Crossing Ability to
Cover All Rooms



Remote Data Management
and Visualisation

F1



Wisulink

Wirelessly Connected Smoke Alarm

DHI-HY-SA30A-R8-B

Power Source

Sealed 3V CR123A lithium battery

Battery Life

10 years

Sensor Type

Split-spectrum photoelectric sensor

Safety Standard

BS 14604:2005

Certification

CE listed

Operating Frequency

868 MHz

Maximum Number of Connections

24

Alarm Sound Level

≥85 dB at 3m (10ft)

Silence Duration

12 minutes

F1



Wisulink

Wirelessly Connected Carbon Monoxide Alarm

DHI-HY-GC20D-R8

Power Source

Sealed 3V CR123A lithium battery

Battery Life

10 years

Sensor Type

Electrochemical sensor

Safety Standard

BS 50291-1: 2018

Certification

CE listed

Operating Frequency

868 MHz

Maximum Number of Connections

24

Alarm Sound Level

≥85 dB at 3m (10ft)

Silence Duration

45 seconds

F1



Wisulink

Wirelessly Connected Heat Alarm

DHI-HY-HT10A-R8

Power Source
Sealed 3V CR123A lithium battery

Battery Life
10 years

Sensor Type
Thermistor

Safety Standard
BS 5446-2:2003

Certification
CE listed

Operating Frequency
868 MHz

Maximum Number of Connections
24

Alarm Sound Level
≥85 dB at 3m (10ft)

Detection Class
Class A1 fire detection (54°C - 65°C)

F1



Wisulink

Wirelessly Connected Carbon Monoxide Alarm with Temperature and Humidity

DHI-HY-GC30A-R8

Power Source
Sealed 3V CR17450A lithium battery

Battery Life
10 years

Sensor Type
Electrochemical

Safety Standard
BS 50291-1:2018

Certification
UKCA, CE listed

Operating Frequency
868 MHz

Maximum Number of Connections
24

Alarm Sound Level
≥85 dB at 3m (10ft)

Silence Duration
9 minutes

Works with our D1, D2 and F1 networks.



WisuLink

Wireless Gateway

REMOTE MONITORING

DHI-HY-GW01A

Power Source
DC 5V

Operating Frequency
868 MHz

Communication
Wi-Fi, TCP/IP(Ethernet)

Installation Positions
Free-standing/Wall-mounted

Certification
UKCA, CE listed

Maximum Number of Connections
24

Works with our D1, D2 and F1 networks.



WisuLink

Pro Wireless Gateway

REMOTE MONITORING

DHI-HY-GW02A

Power Source
AC 100V - 250V, 50/60Hz

Operating Frequency
868 MHz

Communication
Wi-Fi

Installation Positions
Free-standing/Wall-mounted

Certification
UKCA, CE listed

Maximum Number of Connections
24

Works with our
D1, D2 and F1
networks.



Wisulink

REMOTE MONITORING

Environmental Sensor

DHI-HY-ES10A-R8

Power Source Sealed DC 3V lithium battery	Operating Frequency 868 MHz
Battery Life 10 years	RF Range Up to 1000m (3280ft) in free air
Sensor Type Electrochemical	Humidity Accuracy ±1.5% RH
Certification UKCA, CE listed	Temperature Accuracy ±0.1°C
Alarm Type Abnormal temperature alarm, humidity alarm, fault warning & low battery warning	Installation Positions Wall-mounted
	Operating Current Monitoring current: ≤15µA (avg.) Alarm current: ≤35mA (avg.)

Standalone Product Series

The Standalone product series offers comprehensive fire safety and health solutions for homes, detecting smoke, carbon monoxide (CO), abnormal heat and carbon dioxide (CO₂). With effortless setup and operation, these products can be easily installed, providing protection for your family.





Comprehensive Protection
for Residential Fire Safety
and Health



Accurate Detection Based on
Split-Spectrum Technology



Sensitive Alarm and
Effective Notifications



Including Long Battery
Life and Easy-to-Use
Plug-in Adapter

F1



**10-Year Sealed Battery
Standalone Smoke Alarm**

DHI-HY-SA30A

Power Source
**Sealed 3V CR123A
lithium battery**

Battery Life
10 years

Sensor Type
Split-spectrum photoelectric sensor

Safety Standard
BS 14604:2005

Certification
CE listed

Alarm Sound Level
≥85 dB at 3m (10ft)

Silence Duration
12 minutes

Silence by IR Remote
Supported

F1



**10-Year Sealed Battery
Standalone Carbon Monoxide Alarm**

DHI-HY-GC20D

Power Source
**Sealed 3V CR123A
lithium battery**

Battery Life
10 years

Sensor Type
Electrochemical sensor

Safety Standard
BS 50291-1: 2018

Certification
CE listed

Alarm Sound Level
≥85 dB at 3m (10ft)

Silence Duration
45 seconds

Indicator Light
LED (red/yellow/green)

F1



10-Year Sealed Battery Heat Alarm

DHI-HY-HT10A

Power Source
Sealed 3V CR123A
lithium battery

Battery Life
10 years

Sensor Type
Thermistor

Safety Standard
BS 5446-2:2003

Certification
CE listed

Alarm Sound Level
≥85 dB at 3m (10ft)

Detection Class
Class A1 fire detection (54°C - 65°C)

Silence Function
Supported

F1



Air Quality Monitor (Carbon Dioxide)

DHI-HY-M1

Power Source
Built-in 2500 mAh
rechargeable lithium-ion battery

Sensor Type
NIDR + Photoacoustic

CO₂ Measurement Range
400 ppm-5000 ppm

Temperature Measurement Range
0°C to +60°C (32°F to +140°F)

Humidity Measurement Range
0 -99% RH

Temperature Accuracy
± 0.5°C (± 32.9°F)

Humidity Accuracy
± 5% RH

Display
4.23-inch E-ink screen

F2



Wi-Fi Smoke Alarm

DHI-HY-SA2FA

Power Source
3V CR123A replaceable lithium battery

Battery Life
2 years

Sensor Type
Photoelectric

Safety Standard
BS 14604:2005

Certification
CE listed

Alarm Sound Level
≥85 dB at 3m (10ft)

Detection Class
Class A1 fire detection (54°C - 65°C)

Silence Duration
12 minutes

F1



10-Year Sealed Battery Standalone Carbon Monoxide Alarm with Temperature and Humidity

DHI-HY-GC30A

Power Source
Sealed 3V CR17450A lithium battery

Battery Life
10 years

Sensor Type
Electrochemical

Safety Standard
BS 50291-1:2018

Certification
UKCA, CE listed

Operating Frequency
868 MHz

Alarm Sound Level
≥85 dB at 3m (10ft)

Silence Duration
9 minutes



AI-Fire Product Series

The AI-Fire product series provides a cost-effective solution by combining fire alarm products with CCTV cameras. This integration allows the video stream to be synchronised with fire alarm signals, enabling users to streamline fire alarm inspections or conduct post-fire analysis with ease.



Smoke Sensing Network Camera

DHI-HY-SAV849HAP-E

Product Function

Flame Detection + Smoke Sensing + Video Integration

Power Source

DC 12V / PoE and 3V CR123A lithium back-up battery

Smoke Sensor Type

Split-spectrum photoelectric sensor

Camera Field of View

Horizontal: 144°; Vertical: 92°; Diagonal: 179.6°

Camera Image Sensor

1/2.7" CMOS, 2.0mm focal length, wide angle

Safety Standard

BS 14604:2005

Certification

CE listed

Alarm Sound Level

≥85 dB at 3m (10ft)



Smoke Sensing Network Camera Plus

DHI-HY-SAV849HAP-ET

Product Function

**Flame Detection + Temperature Detection
+ Humidity Detection + Smoke Sensing + Video Integration**

Power Source

DC 12V / PoE and 3V CR123A lithium back-up battery

Smoke Sensor Type

Split-spectrum photoelectric sensor

Camera Field of View

Horizontal: 144°; Vertical: 92°; Diagonal: 179.6°

Measurement Range and Accuracy

**Temperature: -20°C ~ 120°C, ±1°C
Humidity: 5 %RH ~ 95 %RH, ±5 %RH**

Camera Image Sensor

1/2.7" CMOS, 2.0mm focal length, wide angle

Safety Standard and Certification

BS 14604:2005, CE listed

Alarm Sound Level

≥85 dB at 3m (10ft)



Flame Detection Network Camera

DHI-HY-FT121LDP

Product Function

**Flame and abnormal temperature detection
based on thermal sensor**

Power Source

DC 12V / PoE

Sensor Type

Visible sensor and thermal sensor

Image

Visible image only

Maximum Resolution

2MP

Detection Angle

Horizontal: 90°, Vertical: 67.5°

Detection Range

Up to 10m

Safety Standard

CE listed



Flame Detection Network Camera Pro

DHI-HY-FT431LDP

Product Function

Flame and abnormal temperature detection based on thermal sensor

Power Source
DC 12V / PoE

Sensor Type
Visible sensor and thermal sensor

Image
Visible and thermal image

Maximum Resolution

4MP

Detection Angle

Horizontal: 90°, Vertical: 67.5°

Detection Range

Up to 10m

Safety Standard

CE listed

System Grades

As per BS 5839-6:2019+A1:2020

- | | |
|-----------------|--|
| Grade D1 | A system of one or more mains powered detectors, each with a tamper-proof standby supply consisting of a battery or batteries. |
| Grade D2 | A system of one or more mains-powered detectors, each with an integral standby supply consisting of a user replaceable battery or batteries. |
| Grade F1 | A system of one or more battery-powered interconnected detectors powered by a tamper-proof primary battery or batteries. |
| Grade F2 | A system of one or more battery-powered detectors powered by a user replaceable primary battery or batteries. |

*Design and specifications are subject to change without notice.

WISUALARM TECHNOLOGY

3rd Floor, Quantum, 60 Norden Road, Maidenhead, Berkshire SL6 4AY

Email: sales@wisualarm.co.uk

Tel: +44 (0) 1628 200 880