

# LNL-1200-S3

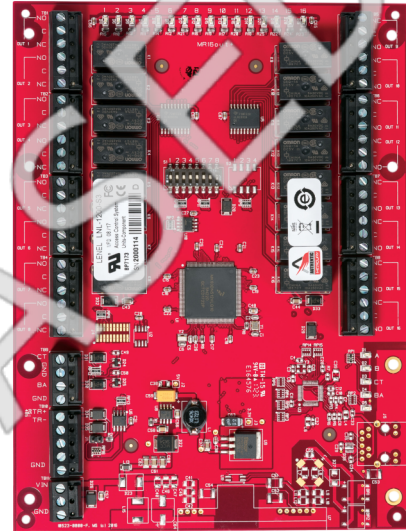
## LNL-1200 Output Control Module Series 3

### Overview

---

Series 3 Lenel® Output Control Module (OCM) communicates directly with the Intelligent System Controller (ISC) by either 2-wire or 4-wire RS-485 communication. Each OCM is an individually-addressed device, and counts as a single device on all Intelligent System Controllers. The OCM can be operated by either 12 or 24 VDC power. Each OCM includes dedicated tamper and power failure input contacts.

The OCM has 16 programmable output relays that can be configured for fail-safe or fail-secure operation. Each relay supports the “On,” “Off,” and “Pulse” OnGuard® software commands.



### Details

---

- 16 Form-C 5 A, 30 VDC contacts for load switching
- 12 or 24 VDC input power
- 2 dedicated digital inputs for tamper and power failure status
- RS-485 communication, multi-dropped (2-wire or 4-wire RS-485)
- On-board termination jumpers
- DIP switch-selectable addressing
- Status LEDs for communication to the host, heartbeat and relay status
- Elevator control, support for 128 floors
- Advanced Encryption Standard (AES) 128-bit or 256-bit encryption supported, depending on ISC and OnGuard version
- Suitable as replacement for Series 1 and Series 2 boards

# LNL-1200-S3

## LNL-1200 Output Control Module Series 3

### Especificaciones técnicas

#### Sistema

Tipo de controlador	Módulo Entrada / Salida
Compatibilidad del software	OnGuard
Control de ascensores	Yes
Máx. nº de plantas controlador ascensor	128
Sólo PCB	Yes

#### Lectores / puertas

Máx. número de puertas	---
Número máximo de lectores	---

#### Interfaces

Conexión host	RS485
---------------	-------

#### Entradas / salidas

Máx. no. de entradas	2
No. máx. de salidas	16, Form-C, 5 A @ 30 VDC, resistive

#### Eléctrico

Voltaje de funcionamiento	12 to 24 VDC $\pm$ 10 %, 1100 mA maximum 12 VDC @ 850 mA nominal, 34.82 BTUs 24 VDC @ 450 mA nominal, 36.82 BTUs
Tipo de fuente de alimentación	VCC
Consumo de corriente	500 mA

#### Físico

Dimensiones físicas	152 x 203 x 25 mm
Peso neto	400 g

#### Medioambiental

Temperatura de funcionamiento	0 to +70°C
Temperatura de almacenamiento	-55 to +85°C
Humedad relativa	0 to 95% noncondensing

#### Regulador

Cumplimiento	CE, RoHS, UL 1076, UL 294
Normativas	FCC Part 15, ULC CSA-C22.2, CAN/ULC-S319-05, cUL/ORD-C1076

#### Inputs / outputs

Inputs	2 unsupervised dedicated for cabinet tamper and UPS fault monitoring
--------	--